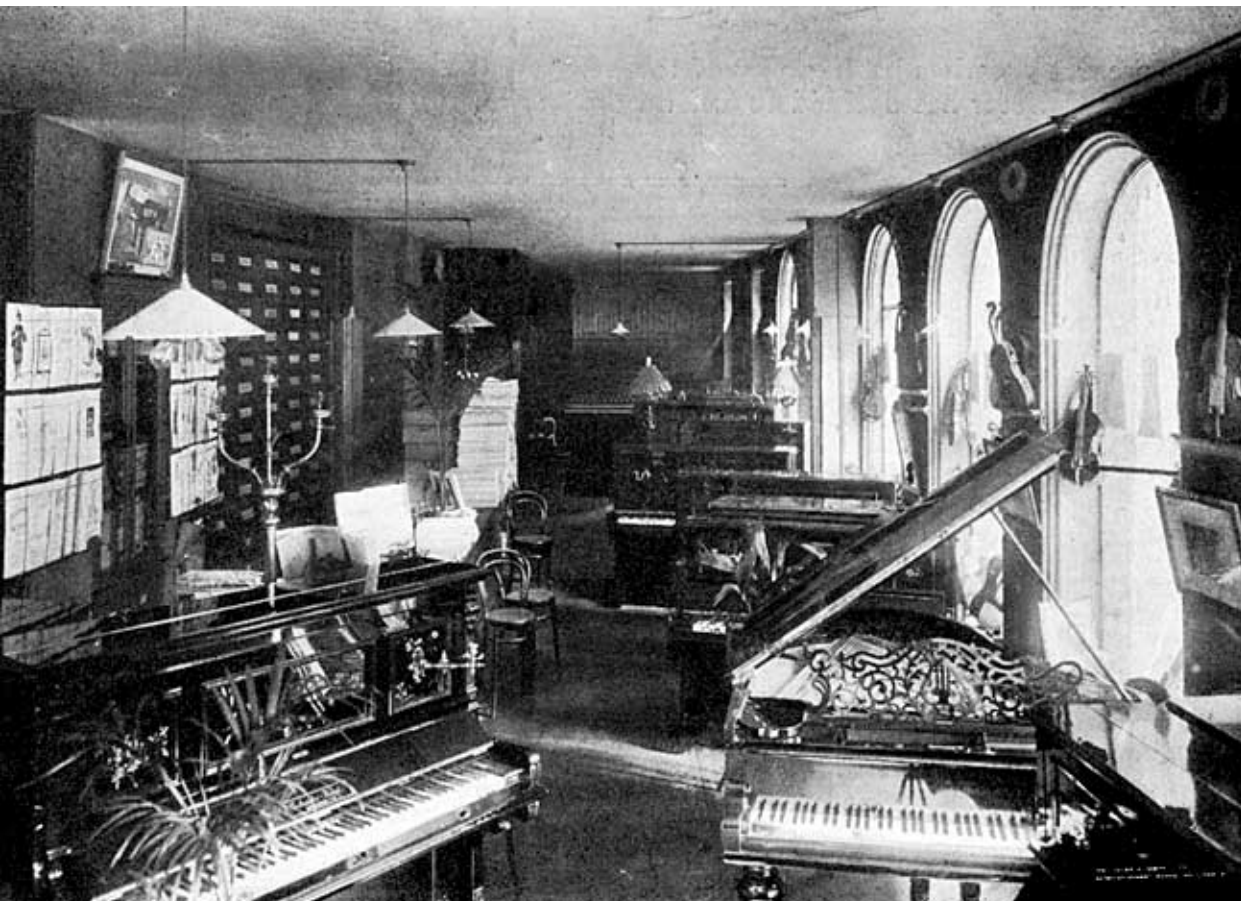




**Messrs.  
HENRY  
FARMER &  
CO.,  
Pianoforte  
Manufacturers,  
High Street,  
NOTTINGHAM.**

FEW names have obtained wider recognition in the musical world than that of the late Mr. Henry Farmer, whose *magnum opus*, the "Violin Tutor," is still regarded as a classic work in this branch of English literature, the copyright of the work having been disposed of for a record price—£1,752—to Mr. Joseph Williams, the well-known publisher. Other standard works by the same composer being his piano tutor and American organ tutor, indeed the former remains at the present day the most saleable of tutors, appreciated alike for its clearness, conciseness, and thoroughness. Mr. Farmer's name also was associated with the foundation of the large business now conducted under the style above indicated, and which, for half a century and upwards, has played a leading part in fostering musical art in this part of the Midland Counties. Messrs. Henry Farmer and Co.'s establishment occupies a prominent position in High Street, and with its handsome and attractive window frontage of plate-glass, its large and well-appointed show rooms, and the general scheme of arrangement, must be designated as one of the very best organised and equipped music warehouses in the provinces. On the ground floor is a fine saloon, in which may be inspected a grand assortment of pianofortes, organs, harmoniums, and minor instruments of every description in all the leading British and foreign makers of repute. The firm are sole agents for Bechstein, Steinway, and other pianoforte manufacturers whose names are familiar to music lovers, while in stock are also submitted Messrs. Farmer's own specialities of make in high-class instruments thoroughly representative of the latest improvements in design, construction, and finish. In the upper show-rooms are also contained large numbers of instruments of various kinds offered at very reasonable prices, providing ample choice of selection to purchasers in each department. As a long recognised centre of the trade, the house has a most extensive stock of sheet and bound music, including the works of standard writers of oratorio, opera, and other branches of higher musical culture, together with the latest productions of song and dance composers, and books of instruction, many of the latter having been originally published by the firm. A portion of the premises consists of a range of well-equipped workshops, furnishing the requisite conveniences for both the manufacturing and repairing departments, in which a staff of thoroughly experienced and reliable hands is employed.

The tuning branch is yet another highly important branch, the services of a number of proficient experts being retained to attend at clients' residences for the execution of orders either in town or country. The establishment is the authorised agency for the disposal of tickets for the leading musical functions held in Nottingham, and is also box office for the various local entertainments, lectures, dramatic and operatic recitals, etc. Possessing so many and varied claims to recognition as caterers for the most numerous section of the inhabitants, the popularity of "Farmer's" as the principal depot for supplies for all accessories incidental to musical practice is of no mushroom growth, and as its time-honoured traditions are intimately identified with many noteworthy works of instruction, and treating of kindred subjects written by the late proprietor, it is not to be anticipated that his successors in the business will by any means diminish the favouritism so long and substantially accorded to their predecessor.



Professors who have used this Celebrated Tutor in the old form, will find that a wonderful improvement has been made in the edition under notice. The additional matter being of very great importance, the Tutor as now issued stands unrivalled.  
*MUSIC REVIEW.*

# HENRY FARMER'S VIOLIN TUTOR

WHEREIN THE ART OF  
Bowing and Fingering  
IS FULLY EXPLAINED IN

A Series of Exercises and Scales  
Progressively Arranged

TO WHICH IS ADDED

A Selection of Favorite Airs  
AS  
SOLOS, DUETTS and TRIOS

Edited and Enlarged

BY

CARL VOLTI.

ALL RIGHTS  
RESERVED.

Price 3/- nett.

ASCHERBERG, HOPWOOD & CREW, LIMITED.

16, MORTIMER STREET, LONDON, W.1.

PRINTED IN ENGLAND.

**The “Violin Tutor”  
by Henry Farmer  
is still in print.**

**Farmer, Henry**, violinist and composer, born at Nottingham, May 13, 1819, son of John Farmer, a vocalist. Chiefly self-taught in music, but had some lessons from J. Wade Thirlwall. A concert-giver from 1841, he led a busy life to the last in his native town. Was for many years leader of the Birmingham Festival Choral Society's concerts and member of the Festival orchestra in 1846 (but not leader), and for some time after. Organist of High Pavement Chapel, Nottingham, for over 40 years; and conductor of the Nottingham Sacred Harmonic Society up to 1880. An active volunteer, he became Captain in the Robin Hood Rifles. Engaged in a music business for fifty years, he retired on a fortune just two days before his death, which took place June 25, 1891. His works comprised a Mass in B flat, published in 1844; a violin concerto, performed at Nottingham, November 25, 1841; other concertos and violin pieces; Overture, "Calypso," Nottingham, 1845. *Glees*—Welcome joy and harmony, prize, Nottingham, 1845; The Wine Cup, and others. "Singing Quadrilles," and various pf. pieces. New Violin School; The Violin Student; New Violin Tutor; Tutor for American Organ and Harmonium; various arrangements, etc. His daughter, EMILY BARDSLEY FARMER (Mrs. Arthur W. Lambert), is a composer, her works including a quartet for pf. and strings; an operetta for children, "Nell," produced at Nottingham, 1893; pieces for harp and pf., songs, etc. Other musical artists of the name were ANNA MARIA FARMER, a vocalist, who died in London, April 11, 1846; and her sister, DINAH FARMER, a pianist of distinction (afterwards, Mrs. De Lisle Allen), who died in London, March 10, 1884.

He was born in Nottingham, the third son of Mr. John Farmer. He was self-taught as a musician, but undertook some study in harmony with Sir Henry Bishop. He played violin in the orchestra when Felix Mendelssohn conducted his oratorio *Elijah* was premiered in Birmingham at the Triennial Music Festival on 26 August 1846.

He was organist of High Pavement Chapel in Nottingham from 1839 to 1879, and he was conductor of the Nottingham Harmonic Society from 1866 to 1880.

He published a Violin Tutor early in his life. His Mass in B flat was sketched by him in 1843 and published in 1847.

In later life he composed Six Short and Easy Trios for Violin, and an anthem, I will Sing of the Mercies of the Lord.

He was a member of the Robin Hood Battalion from 7 April 1860 to 30 March 1878, ending up as Captain

