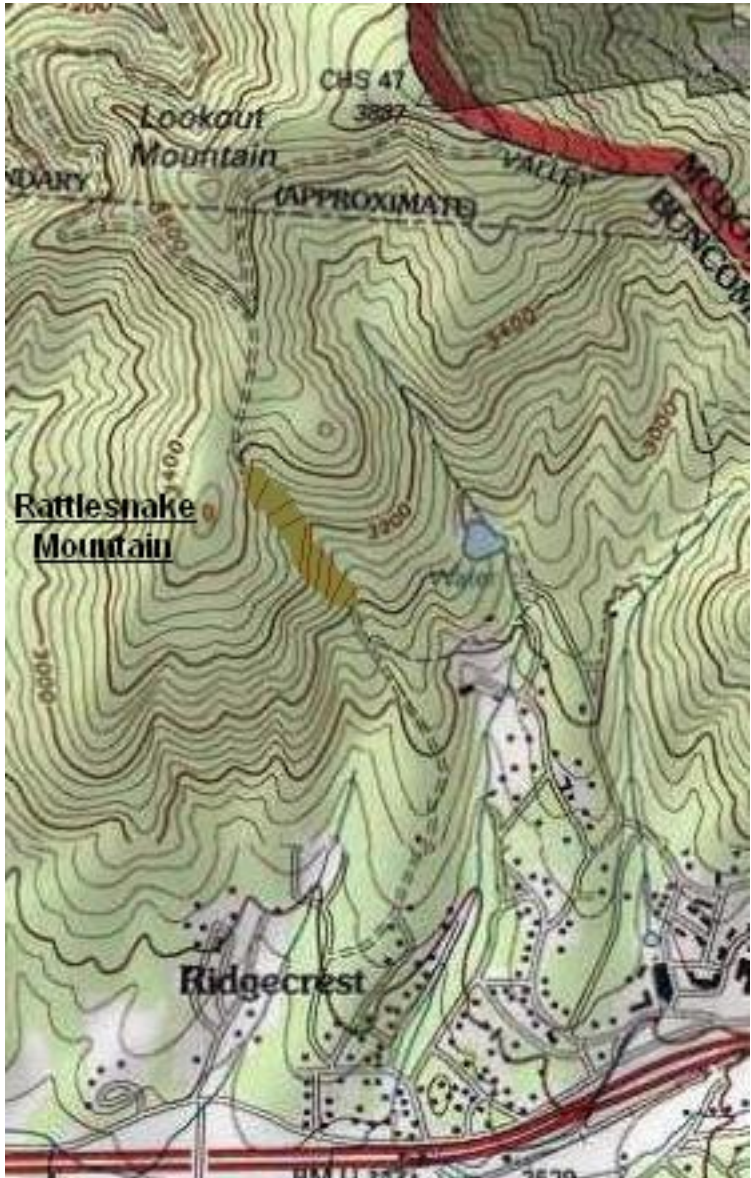


Rattlesnake Mountain's rocky summit is one of the best viewpoints around Black Mountain, Montreat, and Ridgecrest, North Carolina. It has a more dramatic summit, and a completely different view, from its more famous neighbor, Lookout. There is a quick ascent from Ridgecrest Conference Center, but the most rewarding way to reach Rattlesnake is from the Montreat side.

Due to an error that has been perpetuated on most maps (but not the one at right), Rattlesnake Mountain is usually assigned an elevation of 3480 feet. In fact, it has at least 100 feet of prominence above the Rattlesnake-Lookout saddle, instead of the 40 feet shown by USGS, and reaches about the same elevation as the hairpin turn on the Old Mitchell Toll Road due south of Lookout.





Whoever laid out the Rattlesnake Mountain trail from Ridgecrest was much impressed by the dangers of the wilderness.



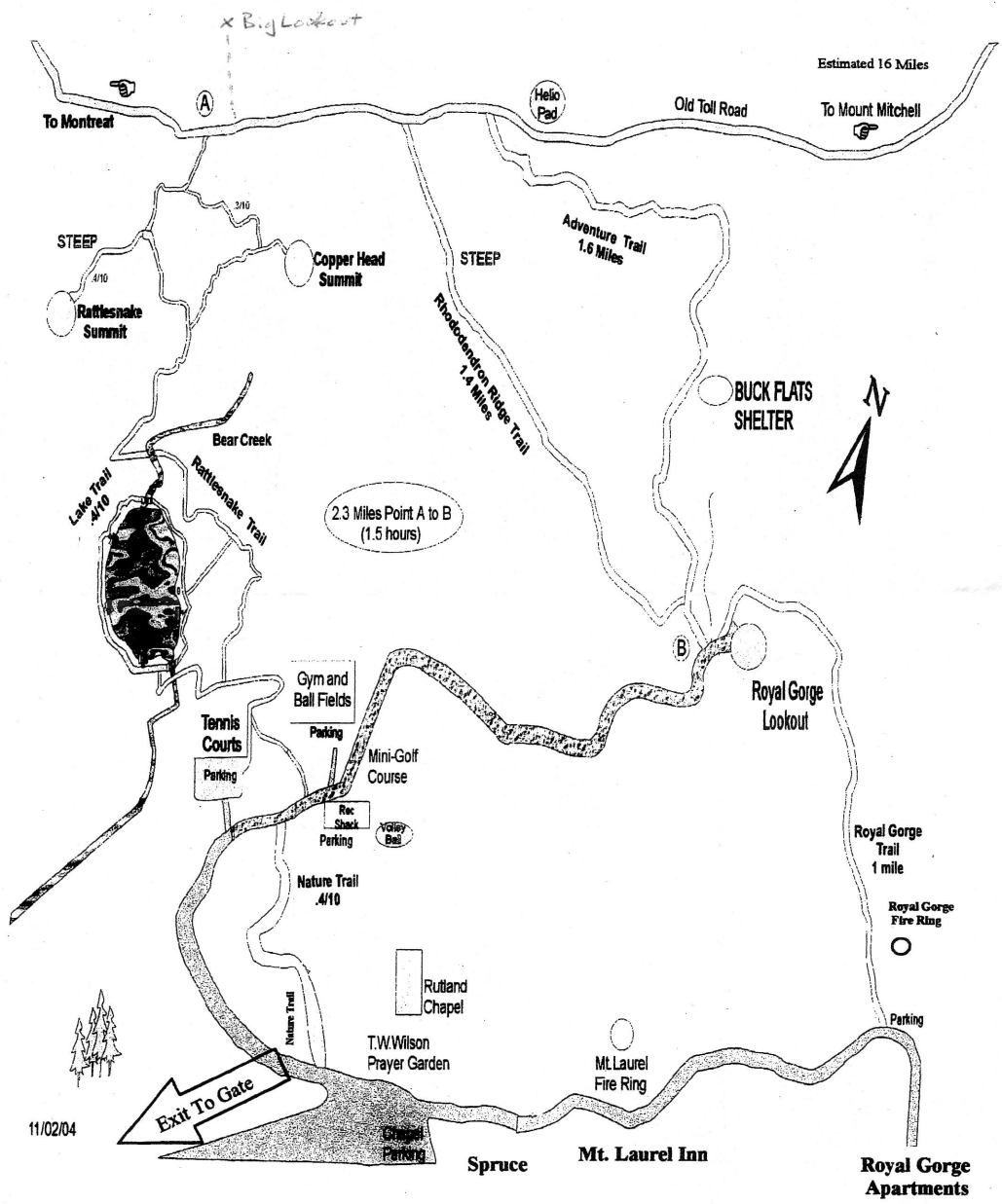
Then again, they may have had a point ...

Rattlesnake Mountain is on private land administered by LifeWay, the Baptist-affiliated organization that runs Ridgecrest Conference Center. Hikers are welcome. Don't camp on Ridgecrest property. Mountain biking is restricted; inquire at 828-669-8022 for details.



Rattlesnake Mountain (L) and Copperhead from Ridgecrest Assembly.

RIDGECREST TRANQUILITY TRAIL SYSTEM



Spruce

Mt. Laurel Inn

Royal Gorge Apartments